



TAPE-IN HAIR EXTENSIONS

hairtalk®
extensions

As the global innovators of the tape-in hair extension, hairtalk® extensions proudly delivers groundbreaking technology that challenges stylists to rethink their service categories. hairtalk® continues to be the leading professional hair extension brand in over 40 countries. Our promise to stylists is to continue providing the highest quality product innovation, tools designed for creative freedom, and full support behind the chair. Welcome to the world of endless possibilities.

Welcome to hairtalk®.

CREATE THE LOOK
17" Original & Original Plus
Colors 62, 18/62 CM & 62/18R

Tape-In Extensions

Made from top quality 100% cuticle-on Remy human hair, hairtalk® Tape-In extensions create a water-tight seal by securing the hair between two hypoallergenic adhesive bands for a long-lasting application. The adhesive wefts lay completely flat on the head, allowing for a safe and discreet application with no tension. Complete a customized transformation for length, volume, and color in under an hour utilizing our three band sizes and styles. Each extension application lasts six to eight weeks and allows for up to three reapplications for a total of eight to ten months of wear. The result is flawless natural body wave extensions that blend perfectly with clients' natural hair.



CREATE THE LOOK
21" Original
Colors 44, 4/18 & 67



CLASSIC EXTENSIONS

The most trusted tape-in, hairtalk® Classic extensions are the most popular tape-ins amongst hairtalk® stylists. With the thinnest adhesive band available, the Classic extension pairs perfectly with our patent pending Pro and patented Plus band styles to create a unique and seamless transformation.



original

Provide full coverage for clients with normal to thick hair

20 BAND PACK

HT100	13" / 33cm	N, B, RE, CM, S
HT101	17" / 43cm	N, B, RE, CM, S
HT102	21" / 53cm	N, B, RE, CM, S
HT103	25" / 63cm	N, B, RE

12 BAND PACK

HT104	13" / 33cm	N, B, RE
HT105	17" / 43cm	N, B, RE
HT106	21" / 53cm	N, B, RE

1.6" / 4cm



actual size



petite

Perfect for thinner hair, smaller heads and areas of higher visibility

12 BAND PACK

HT110	13" / 33cm	N, B, RE, CM, S
HT111	17" / 43cm	N, B, RE, CM, S
HT112	21" / 53cm	N, B, RE, CM, S
HT113	25" / 63cm	N, B, RE

1.1" / 3cm



actual size



mini strand

Ideal for bang enhancement, chemical/cut corrections and areas near the hairline, crown and parietal ridge

20 BAND PACK

HT114	13" / 33cm	N, B, RE
HT115	17" / 43cm	N, B, RE
HT116	21" / 53cm	N, B, RE

0.4" / 1cm



actual size

AVAILABLE IN ORIGINAL, PETITE & MINI STRAND:

Naturals (N): 1, 2, 3, 4/18, 44, 4, 5, 55, 6, 7, 8, 18, 20

Blondes (B): 23, 24, 25, 27, 613, 60A, 61, 62, 67, 69

Reds (RE): 28, 29, 30, 33, 34, 130, 134, 140

AVAILABLE IN ORIGINAL & PETITE:

Silvers (S): 70, 72

Colormelts™ (CM): 3/GR CM, 3/7 CM, 4/8 CM,

5/8 CM, 5/23 CM, 5/613 CM, 6/24 CM, 6/60A CM,

7/27 CM, 8/23 CM, 8/25 CM, 18/62 CM, 20/60A CM

CREATE THE LOOK
17" Original & Original Pro
Colors 3, 4 & 7



PRO EXTENSIONS

A cross between hairtalk® Classic and patented Plus extensions, the patent pending Pro is a premium band style that limits visibility at the adhesive attachment, creating a more seamless blend than our Classic extensions.



original pro

PATENT PENDING

Provide full coverage with a more hidden blend for clients with normal to thick hair

20 BAND PACK

HT100P	13" / 33cm	N, B, RE, CM, S
HT101P	17" / 43cm	N, B, RE, CM, S
HT102P	21" / 53cm	N, B, RE, CM, S
HT103P	25" / 63cm	N, B, RE, CM, S



actual size



petite pro

PATENT PENDING

Blend seamlessly and are ideal for thinner hair, smaller heads and areas of higher visibility

12 BAND PACK

HT110P	13" / 33cm	N, B, RE, CM, S
HT111P	17" / 43cm	N, B, RE, CM, S
HT112P	21" / 53cm	N, B, RE, CM, S
HT113P	25" / 63cm	N, B, RE, CM, S



actual size

AVAILABLE IN ORIGINAL PRO & PETITE PRO:

Naturals (N): 1, 2, 3, 4/18, 44, 4, 5, 55, 6, 7, 8, 18, 20

Blondes (B): 23, 24, 25, 27, 613, 60A, 61, 62, 67, 69

Reds (RE): 28, 29, 30, 33, 34, 130, 134, 140

Silvers (S): 70, 72

Colormelts™ (CM): 3/GR CM, 3/7 CM, 4/8 CM,

5/8 CM, 5/23 CM, 5/613 CM, 6/24 CM, 6/60A CM,

7/27 CM, 8/23 CM, 8/25 CM, 18/62 CM, 20/60A CM

CREATE THE LOOK
13" Original & Original Plus
Colors 3/7 CM & 3



PLUS EXTENSIONS

hairtalk® patented Plus extensions feature a concealed adhesive band and are made to look and feel as if they are growing directly from the scalp. Perfect for areas of higher visibility, Plus extensions mimic the natural root and create a nearly invisible result.



original plus

PATENTED

Designed to conceal for clients with normal to thick hair

12 BAND PACK

HT107	13" / 33cm	N, B, RE, R
HT108	17" / 43cm	N, B, RE, R
HT109	21" / 53cm	N, B, RE, R

1.6" / 4cm



actual size



petite plus

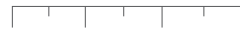
PATENTED

Made to remain unseen for thinner hair, smaller heads and areas of higher visibility

12 BAND PACK

HT120	13" / 33cm	N, B, RE, R
HT121	17" / 43cm	N, B, RE, R
HT122	21" / 53cm	N, B, RE, R
HT123	25" / 63cm	N, B, RE

1.1" / 3cm



actual size



mini strand plus

PATENTED

Ideal to stay hidden near the hairline, crown and parietal ridge or to add Pops of Color

20 BAND PACK

HT117	13" / 33cm	N, B, RE, R
HT118	17" / 43cm	N, B, RE, R, PC
HT119	21" / 53cm	N, B, RE, R, PC

0.4" / 1cm



actual size

AVAILABLE IN ORIGINAL PLUS, PETITE PLUS & MINI STRAND PLUS:

Naturals (N): 1, 2, 3, 4/18, 44, 4, 5, 55, 6, 7, 8, 18, 20

Blondes (B): 23, 24, 25, 27, 613, 60A, 61, 62, 67, 69

Reds (RE): 28, 29, 30, 33, 34, 130, 134, 140

Rooted (R): 70/3R, 27/4R, 25/4R, 8/5R, 23/6R, 613/6R, 25/8R, 613/18R, 62/18R, 60A/20R

AVAILABLE IN MINI STRAND PLUS:

Pops of Color (PC): GR/3R, TL/3R, PK/4R, PR/4R, GN/5R, LA/23R, OR/23R, PK/613R, SP/613R, YL/613R

COLOR TECHNOLOGY



colormelts™

PATENTED

Inspired by hand-painted techniques such as Ombre and Balayage, Colormelts™ technology achieves clients' desired style without chemical services or treatments.

original

20 BAND PACK

HT100	13" / 33cm	CM
HT101	17" / 43cm	CM
HT102	21" / 53cm	CM

petite

12 BAND PACK

HT110	13" / 33cm	CM
HT111	17" / 43cm	CM
HT112	21" / 53cm	CM

original pro

20 BAND PACK

HT100P	13" / 33cm	CM
HT101P	17" / 43cm	CM
HT102P	21" / 53cm	CM
HT103P	25" / 63cm	CM

petite pro

12 BAND PACK

HT110P	13" / 33cm	CM
HT111P	17" / 43cm	CM
HT112P	21" / 53cm	CM
HT113P	25" / 63cm	CM



rooted

Influenced by hair color trends such as Shadow Root and Lived-in Balayage, Rooted technology allows for a natural, grown-out appearance without the wait.

original plus

12 BAND PACK

HT107	13" / 33cm	R
HT108	17" / 43cm	R
HT109	21" / 53cm	R

petite plus

12 BAND PACK

HT120	13" / 33cm	R
HT121	17" / 43cm	R
HT122	21" / 53cm	R

mini strand plus

20 BAND PACK

HT117	13" / 33cm	R
HT118	17" / 43cm	R
HT119	21" / 53cm	R

Colormelts™ (CM)*: 3/GR CM, 3/7 CM, 4/8 CM, 5/8 CM, 5/23 CM, 5/613 CM, 6/24 CM, 6/60A CM, 7/27 CM, 8/23 CM, 8/25 CM, 18/62 CM, 20/60A CM

*Select Colormelts™ are also available in the patented hairband by hairtalk® accessory piece.

Rooted (R)*: 70/3R, 27/4R, 25/4R, 8/5R, 23/6R, 613/6R, 25/8R, 613/18R, 62/18R, 60A/20R

*Select Rooted colors are also available in the Bang In & Top of the Head accessory pieces.



pops of color

A fusion of technologies: combining our Rooted Mini Strand Plus with vivid hair color technology, this 100% Remy human hair option is the perfect way to add a little color without commitment.

mini strand plus

20 BAND PACK

HT118 17" / 43cm PC

HT119 21" / 53cm PC

0.4" / 1cm



actual size



fantasy synthetic hair blends

A fusion of fibers: a proprietary blend of human hair and temperature safe synthetic fibers, hairtalk® Fantasy Synthetic Hair Blends create vibrant color effects that won't fade away.

rainbow pack

24 BAND PACK

HT140 17" / 43cm Rainbow

color of your choice

12 BAND PACK

HT141 19" / 48cm HB

1.6" / 4cm



actual size

All seven synthetic hair blend colors are available individually, or opt for our Rainbow Pack that includes the six most popular colors.

Pops of Color (PC): GR/3R, TL/3R, PK/4R, PR/4R, GN/5R, LA/23R, OR/23R, PK/613R, SP/613R, YL/613R

Synthetic Hair Blend (HB): HB11 (Turquoise), HB13 (Ocean Blue), HB17 (Hot Pink), HB23 (Lilac), HB25 (Purple), HB27 (Lavender), HB29 (Soft Peach)

Rainbow Pack: HB11 (Turquoise), HB13 (Ocean Blue), HB17 (Hot Pink), HB25 (Purple), HB27 (Lavender), HB29 (Soft Peach)



TAPE-IN TOOLS

Perfect your tape-in extensions service with hairtalk® signature professional tools. All the tools you need for tape-in application, removal, and reapplication in one place.



professional color ring

HT154

A stylist's must-have tool for color matching. The Professional Color Ring is made of 100% human hair and includes all colors, band styles, and band sizes offered in hairtalk® Tape-In extensions.



tape tabs

- HT155** Original Tape Tabs (60 tabs)
- HT167** Single Sided Original Tape Tabs (60 tabs)
- HT156** Petite Tape Tabs (36 tabs)
- HT168** Single Sided Petite Tape Tabs (36 tabs)
- HT158** Mini Strand Tape Tabs (60 tabs)

Designed specifically for reuse of hairtalk® Tape-In extensions.



PATENT PENDING
acrylic removal & reapplication board
HT202 | 12.6" W x 8.6" L

This lightweight Acrylic Removal & Reapplication Board is the ideal organizational tool for the perfect reapplication.



liquid adhesive
HT169 | 0.5 fl. oz.

Liquid adhesive is a go-to option for clients with extremely oily scalps or extra coarse hair.

Should be applied sparingly on adhesive band prior to application.



hair grippers
HT215 | 4 pieces per pack

Secure loose hairs up and away. These velcro Hair Grippers won't snag or get tangled, and are super light for clean sectioning and precise placement.



remove solvent
HT165 Remove Solvent (6 fl. oz.)
HT166 On-the-Go Remove Solvent (2 fl. oz.)

This alcohol based solvent is formulated specifically for the quick and gentle removal of hairtalk® extensions.



cleanse plus intensive shampoo
HT305 | 25 fl. oz.

Cleanse Plus is an intensive clarifying shampoo specifically designed to deep clean natural hair prior to the application of hairtalk® extensions.



sectioning brush
HT222
white rattail comb
HT223

Ergonomically designed, the Sectioning Brush and White Rattail Comb are key tools in precision sectioning when applying extensions.

COLOR SWATCHES

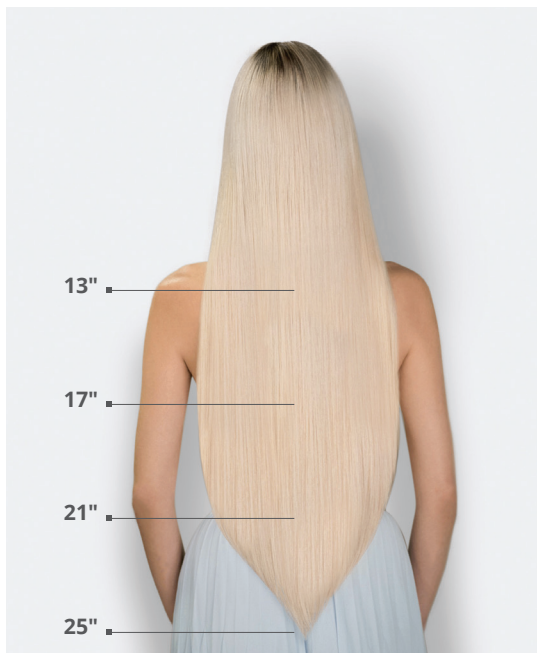
Naturals (N)



Blondes (B)



Reds (RE)



LENGTHS

hairtalk® Tape-In extensions are available in four lengths and come tapered, allowing for a seamless blend into clients' natural hair.



COLOR SWATCHES

Silvers (S)



Rooted (R)



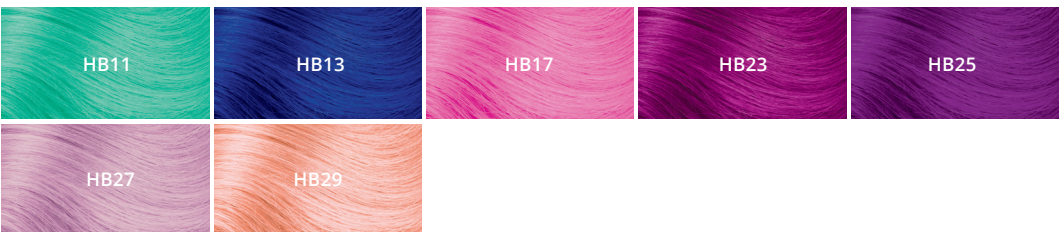
Colormelts™ (CM) PATENTED



Pops of Color (PC)



Fantasy Synthetic Hair Blends (HB)



Please note root transitions may vary slightly. Swatches are shade representations only. Please refer to your Professional Color Ring when selecting shades. Warranty: hairtalk® warrants the quality of 100% human hair and adhesive bands for 6 months from date of purchase. Please refer to hairtalkusa.com for more details. For patent information, please visit hairtalkusa.com.

ENDLESS
POSSIBILITIES

hairtalk® extensions

Hallandale Beach, FL
954.963.9680 | 800.327.7971
hairtalkusa.com

© 2021, IDC, All Rights Reserved

@hairtalkusa
#hairtalkextensions

