

hairtalk®
extensions

APPLICATION REFERENCE GUIDE: **WEFT**

From the innovators of the tape-in extension comes the highly requested hairtalk® Weft Collection. Comprised of both Single and Double density Hand Tied and Machine Weft extensions, this collection provides the freedom to customize every transformation. Creating seamless length, color and volume all while accommodating clients' active lifestyles is more achievable than ever. Choose from 23 curated colors to create the perfect new look with the top quality 100% Remy human hair you know and trust.

The hairtalk® Weft Collection and Weft Master Certification course was developed in partnership with industry educator and weft extension expert, Katie Tellor. This one of a kind course provides stylists with the tools and skills needed to compete in the ever-expanding extensions market. In this course, you will master the hairtalk® Classic and Instant Beaded Row™ foundation methods of application that utilizes a specialty knotting method and technique that ensures the weft is exceptionally secure and comfortable on your client's head.

The Weft Application Reference Guide is designed to be used in conjunction with a hairtalk® hands-on certification course. For course offerings and dates visit: www.hairtalkusa.com/education

WEFT SIZES & STYLES



Single Hand Tied Weft
11" & 5.5" wide



Single Machine Weft
30"-35" wide



Double Hand Tied Weft
11" & 5.5" wide



Double Machine Weft
30"-35" wide



During consultation, it's important to discuss the full preparation and installation process along with proper client care and plans for reapplication.

STEP 1: CONSULTATION QUESTIONS

Has your client ever worn hair extensions?

Clients who've worn extensions before may be more comfortable with the process. However, each application must be preceded with a full consultation and client care expectations.

What are your client's hair goals?

Understand your client's goal in order to determine the best products, colors, lengths, and quantities. This can include volume, length, color effects, haircut correction and more.

What is your client's lifestyle?

Understanding your client's lifestyle will help you select the best products and manage your client's expectations.

When was your client's last chemical service – color, keratin, relaxer or perm?

Chemical services should be performed 48 hours prior to any hairtalk® extensions application.

How does your client care for their own hair?

Always refer to the hairtalk® Weft Client Care Card. Consult and price services with hairtalk® Hair Care, specifically formulated for extensions and perfect for your client's natural hair.

Does your client swim, sun or sweat often?

Your client can still do these things, however they must take extra care to protect their extensions. Swimming in a pool/ocean or using hard water may expose hair to chemicals or minerals and can cause discoloration. Refer to the hairtalk® Weft Client Care Card for proper at home care.

Is your client taking any medications?

Some medications and medical conditions may promote hair loss, thinning, or skin irritations. These clients may not be good candidates for extensions.

STEP 2: STYLE AND COLOR MATCHING

For the most accurate color match, use natural lighting. Using the hairtalk® Weft Collection Color Ring, identify weft sizes, styles, and colors.

Begin by matching mid-shaft to ends, as this is what you'll be extending. Then consider the client's root color. We recommend using multiple colors, including Balayage, Rooted, and more to create the perfect dimensional blend.

Next, determine the length and amount of hair extensions needed based on client's hair density, length and desired end result. Volume and color effects can sometimes be achieved with one weft.

APPROXIMATE GRAMS PER ROW FOR FULL HEAD APPLICATION

WEFT	LENGTH	GRAMS
1 Double Hand Tied Weft 11" wide	14"	24 g
	18"	30 g
	22"	40 g
1 Single Hand Tied Weft 11" wide	14"	12 g
	18"	15 g
	22"	20 g
1 Double Hand Tied Weft 5.5" wide	14"	12 g
	18"	15 g
	22"	20 g
1 Single Hand Tied Weft 5.5" wide	14"	6 g
	18"	7.5 g
	22"	10 g
1 Double Machine Weft 30" - 35" wide	14"	120 g
	18"	160 g
	22"	200 g
1 Single Machine Weft 30" - 35" wide	14"	60 g
	18"	80 g
	22"	100 g

Weft row sections have a curve, creating a U-shape. The depth and curvature of U-shape determines the overall width of the row and amount of tension placed on anchor points due to regrowth.

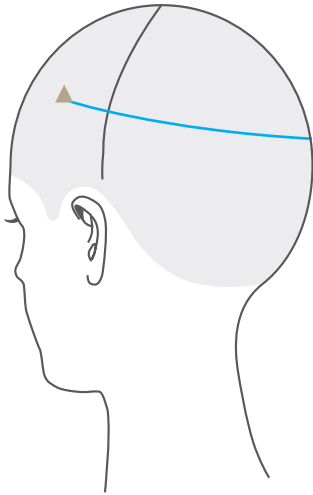


Figure 1
Low/No Tension
 Horizontal, no curve row that evenly distributes weight of weft creating low/no tension. Extensions fall straight down and additional extensions needed to blend around the hairline.

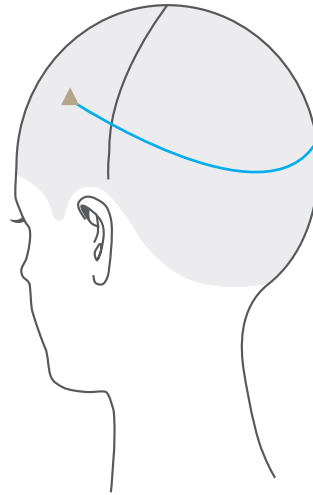


Figure 2
Medium Tension
 Modest curve that evenly distributes weight of weft with slight tension at anchor points. Extensions fall slightly forward for added blending on face-framing layered haircuts.

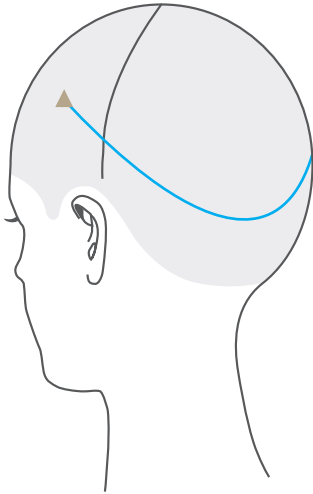


Figure 3
High Tension
 Dramatic, deep curve row that creates high tension of weft on anchor points. Extensions fall forward for maximum blending on blunt and heavily layered haircuts.

- Weft
- ▲ Anchor Bead

NOTES

Color and Chemicals

NOTE: Chemically processing and/or coloring extensions voids the hairtalk® warranty. If you choose to custom color extensions to a desired shade, **DO NOT** deposit more than 2 levels. **DO NOT** lift color.

Clarify

Gently detangle and wash client's hair 2x with hairtalk® Cleanse Plus Intensive Shampoo to remove oil, impurities, and buildup from hair and scalp. **DO NOT apply conditioner or styling products.**

Blow Dry | Flat Iron

Dry client's natural hair completely and flat iron smooth.

Sectioning

Using the hairtalk® Sectioning Brush or Rattail Comb, and Croc Clips, section hair into 3 sections. See Figures 4 & 5. Clip Section 2 & 3 forward. Begin application in Section 1 at the back of the head, working from occipital bone upward.

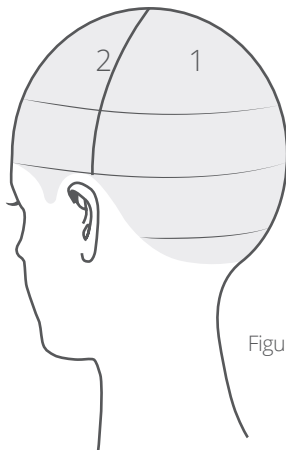


Figure 4

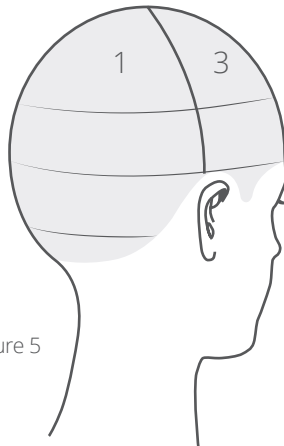


Figure 5

Row Spacing

On average, leave between 0.5"/1 cm to 1"/2.5 cm in between rows and 1"/2.5 cm from any hairline.

NOTE: number of rows applied depends on how many wefts are needed.

Weight Line

If needed, diffuse any visible weight line using texturizing shears as you drop each section before applying that row.

Tools

To ensure clients are provided a luxury service experience during installation, certain tools are suggested to be prepared prior to installation of weft.

- **Bead Looping Tool:** if using the Classic Beaded Row method, insert 8-10 beads onto the Bead Looping Tool.
- **C-Needles:** prepare and thread at least 2 C-Needles with 2 ½ arms length of thread per needle. Insert thread through eye of C-Needle and pull thread to create a tail, aligning both ends. Tie the ends using a traditional knot 3 times.

Instructions offered in the *hairtalk® Weft Application Reference Guide* begin on the left side of the head. Left-handed stylists should consider reversing the direction of steps indicated and begin application on the right side of the head.

PART 1 - BEADED FOUNDATION ROW APPLICATION

HAIRTALK® CLASSIC BEADED ROW V. INSTANT BEADED ROW™ (Patent Pending)

- The *hairtalk® Classic Beaded Row* utilizes a specialized knotting technique developed by *hairtalk®* extensions to ensure the weft is exceptionally secure and comfortable. This method creates optimal stability for a safe, long-lasting and undetectable application.
- The innovative *Instant Beaded Row™* maintains the high quality standards of the *Classic Beaded Row* method and aligns it with the speed and precision of *hairtalk® Tape-In* extensions application. Utilizing pre-sewn beaded rows, apply your foundation row in half the time and increase your service profitability.



ROW SECTIONING

- Begin Row 1 at the nape in Section 1. Drop approximately 0.75"/2 cm from the hairline. Use rattail to find the spot where the tail disappears: this ensures proper placement for Row 1, especially if the client wears hair pulled up. **Figure 6**

NOTE: diameter of client's head will determine number of hand tied wefts or width of machine weft, and length of beaded row.

- Leave approximately 1"/2.5 cm from left and right side hairline, and clip hair away. **A**
- Measure weft placement on Row 1 by marking starting and ending point using a marking tool. **B**

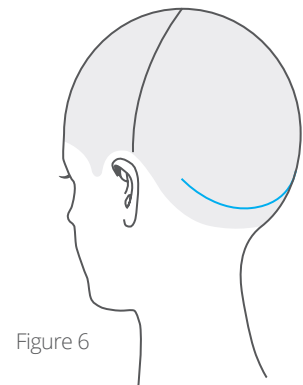


Figure 6

STEP 1: APPLYING OPENING ANCHOR BEAD

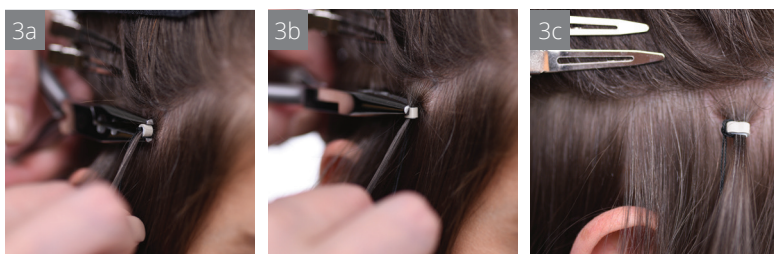
- Beginning at the left side, take a small oblong-shaped section, approximately 0.5"/1 cm thick. **1a**
NOTE: the amount of hair taken for the section should completely fill the bead.
- Using pre-beaded Bead Looping Tool, insert the sectioned hair through the center of the loop. Place the end of the Bead Looping Tool on the top of the section, grip and gently slide up the bead leaving 0.25"/0.5 cm from the scalp and hold in place. **1b**
- While holding the bead in place, gently pull the Bead Looping Tool away from the head. **1c**
- Over-direct section, clipping the beaded hair up using 2 single prong clips. **1d**

**STEP 2: SEWING OPENING ANCHOR BEAD**

- Using pre-threaded C-Needle, drop the needle point into the bead opening facing upward and pull the needle through the center of the knotted thread tail to create a lock stitch. **2a**
NOTE: this will secure the thread to the opening anchor bead.
- Using a hitch stitch, continue threading bead 4x. **2b, 2c**

**STEP 3: SECURING OPENING ANCHOR BEAD**

- Unclip the beaded hair, hold hair at a 90 degree angle away from the head. Grip using Needle Nose pliers with palms facing outward. **3a**
- Slide bead up and to the right of the oblong-shaped section, rotate hand until palm faces client's head. **3b**
- Gently press pliers to flatten the bead so it lays flat and comfortably against the scalp. **3c**

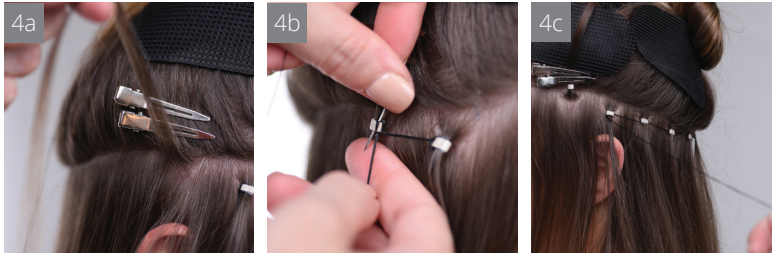


PART 1A - CLASSIC BEADED ROW

STEP 4: APPLYING, SEWING, AND SECURING INTERIOR BEADS

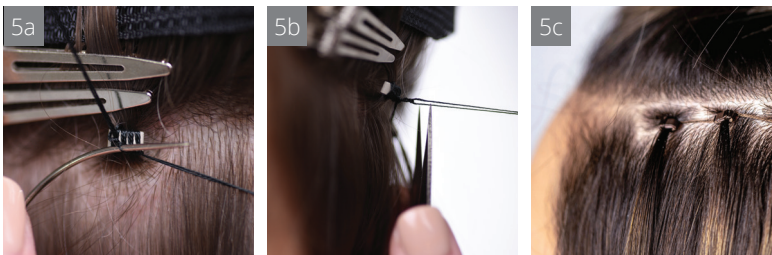
Leaving 0.75"/2 cm, take a U-shaped section from the last beaded section. **4a**

- Loop hair, grip and slide bead while pulling the looping tool away, and clip hair up and away.
NOTE: When beading interior beads, simply slide bead up to the center of section.
- Drop the needle point into the bead opening and pull needle. Repeat for a total of 5x and secure bead. **4b**
NOTE: You do not need to pull needle through center of knotted thread.
- Repeat Steps 1, 2, 3 & 4 across the row section until approximately 0.75"/2 cm before the closing anchor bead mark. **4c**



STEP 5: APPLYING, SEWING, AND SECURING CLOSING ANCHOR BEAD

- Take a small oblong-shaped section, loop hair, grip and slide bead while pulling the looping tool away, and clip hair up and away.
- Drop the needle point into the bead opening and pull needle. Repeat for a total of 5x. **5a**
- Send your needle through the hitches created on the bead. Repeat 3x to secure your stitches. **5b**
- Finally, clip needle off thread and tie a traditional knot. Repeat 3x and trim off excess thread above knot and secure closing anchor bead to complete the Classic Beaded Row. **5c**
NOTE: When securing closing anchor bead, slide bead up and to the left of the oblong-shaped section.



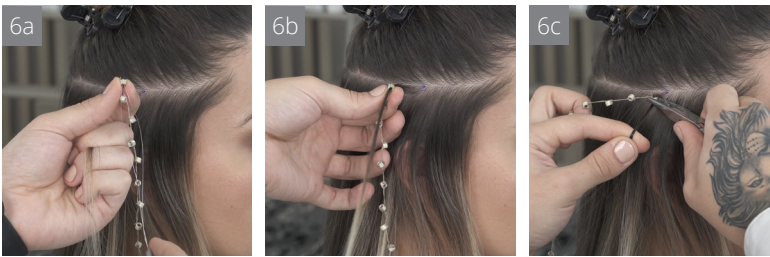


Completed Beaded Row

PART 1B - INSTANT BEADED ROW™ (Patent Pending)

STEP 1: APPLYING OPENING ANCHOR BEAD

- Beginning at the left side, take a small oblong-shaped section, approximately 0.5"/1 cm thick.
NOTE: the amount of hair taken for the section should completely fill the bead.
- Insert Bead Looping Tool through the bottom of the last bead on the Instant Beaded Row™. **6a**
NOTE: When inserting bead to looping tool, ensure the thread line is always on top.
- Insert sectioned hair through center of Bead Looping Tool. Place the end of the looping tool on the top of the section, grip and gently slide up the bead leaving 0.25"/0.5 cm from the scalp.
- While holding the bead in place, gently pull the Bead Looping Tool away from the head. **6b**
- Using the Needle Nose pliers, slide bead up and to the right of the oblong-shaped section, rotate hand until palm faces client's head.
- Gently press pliers to flatten the bead so it lays flat and comfortably against the scalp. **6c**



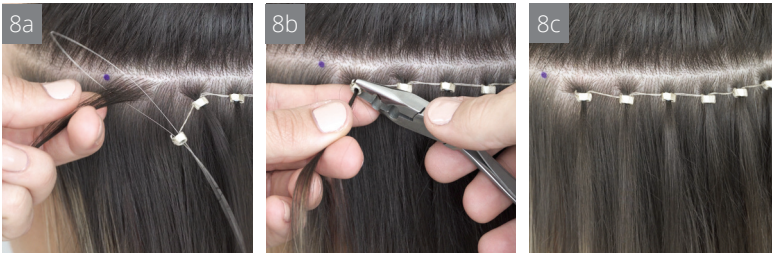
STEP 2: APPLYING INTERIOR BEADS

- Gently stretch the Instant Beaded Row™ rightward to determine placement of next bead. **7a**
- Take a U-shaped section, insert bead onto the looping tool, loop hair, grip and slide bead while pulling the looping tool away, and clip hair up and away. **7b**
- Using the Needle Nose pliers, grip and gently slide bead up to the center of the section, rotate hand until palm faces client's head.
- Gently press pliers to flatten the bead so it lays flat and comfortably against the scalp. **7c**
- Repeat Step 2 until reaching right anchor bead. **7d**



STEP 3: APPLYING CLOSING ANCHOR BEAD

- Stretch the Instant Beaded Row™ to mark the right anchor bead placement.
- Take a small oblong-shaped section, insert bead onto the looping tool, loop hair, grip and slide bead while pulling the looping tool away, and clip hair up and away. **8a**
- Using the Needle Nose pliers, grip and slide bead up and to the left of the oblong-shaped section, rotate hand until palm faces client's head. **8b**
- Gently press pliers to flatten the bead so it lays flat and comfortably against the scalp to complete the Instant Beaded Row™. **8c**



Instant Beaded Row™

PART 2 - WEFT APPLICATION

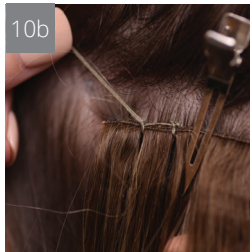
STEP 1: PLACING WEFT

- Begin at left side anchor bead, use single prong clips to place and clip weft across the beaded row. **9a**
- Continue clipping weft until reaching the closing anchor bead.



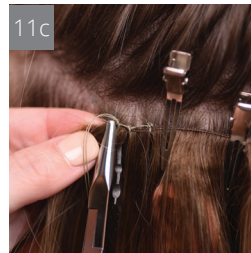
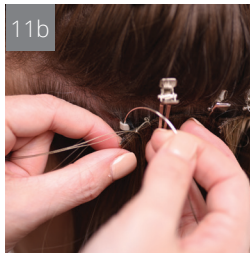
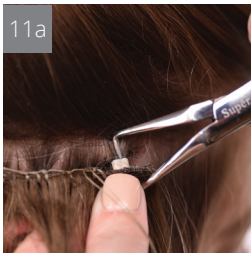
STEP 2: SEWING THE WEFT

- Using pre-threaded C-Needle, drop needle behind the thread connecting the beaded foundation row up into the weft underneath the seam, sewing weft slightly to the right of the opening anchor bead.
- Create a lock stitch by pulling needle through the center of knotted needle tail. **10a**
- Create hitch stitches moving leftward until reaching the opening anchor bead. **10b**



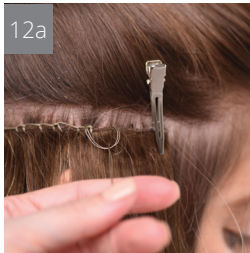
STEP 3: SEWING WEFT TO BEAD

- Insert Claw Nose pliers vertically through the center of the bead and gently press to open. **11a**
- Drop and pull your needle into the opened bead 1x to create a hitch stitch. **11b**
- Gently press Needle Nose pliers to close bead. **11c**

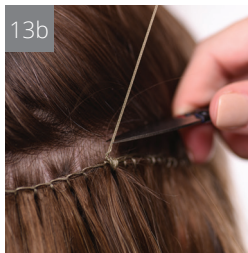
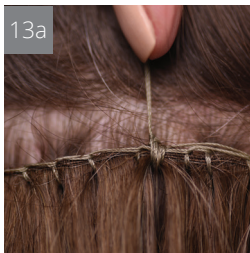


STEP 4: CONTINUE SEWING WEFT

- Once reaching the end of the weft, sew down the corner using a lock stitch by dropping needle behind client's hair up into the weft underneath the seam and pull needle through the center of knotted needle tail.
- Continue sewing towards first interior bead, applying hitch stitches making sure to drop needle behind thread and underneath the seam.
- Secure weft to interior bead as mentioned in Step 3: Sewing Weft to Bead.
- Repeat steps until reaching the other end of the weft and sew down corner to oblong-shaped section as previously mentioned. **12a**

**STEP 5: SECURING WEFT AT THE CLOSING ANCHOR**

- Stitch backward away from the anchor bead until reaching a space behind the ear, between two interior beads. Then sew 5x hitch stitches close together. **13a**
- Using Spring Loaded Nippers, clip the needle from the thread, leaving 3- 5 inches to tie off. **13b**
- Tie a traditional knot 3x. Trim off excess thread. **13c**





Completed Weft (topside)



Completed Weft (underside)

As you move up the head vertically, each row will begin approximately 0.5" / 1 cm to 1" / 2 cm from the last.

Repeat Steps from Application Part 1 and 2 for each row installed.

Number of rows can range from 1-3 and will vary by client.

Row 1 is typically comprised of hairtalk® Single or Double Hand Tied 5.5" weft. Remaining rows should be customized in 11" and/or 5.5" Single and Double Hand Tied Wefts. **Figures 7 - 9**

When using multiple wefts per row, follow placement as shown in **Figure 9**.

- Placement of first weft begins at opening anchor bead until reaching the last interior bead.
- Placement of second weft begins at closing anchor bead until reaching the first interior bead

Note: On either side, the section in between the anchor bead and the 2nd bead will only have a single weft applied. Allowing for less tension on anchor beads and removes the added bulk from doubling of wefts.

When you reach the row above the ear, typically Row 3, measure 1" / 2.5 cm (depending on client's hair density) above the ears in Sections 2 and 3 and drop down your sections to begin full row.

Suggested Placement: Mini and Full Rows

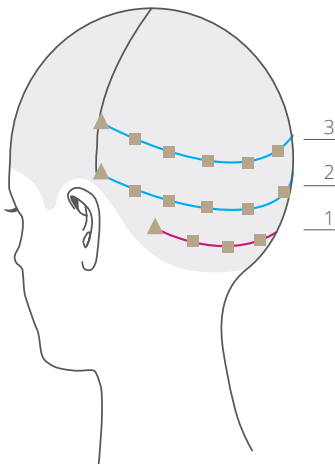


Figure 7

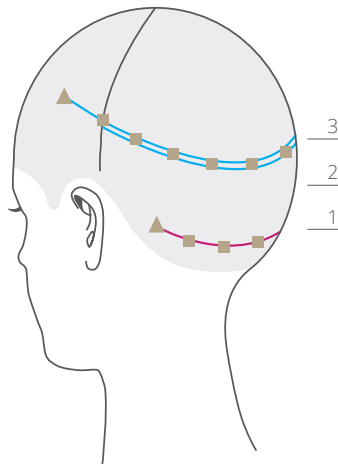


Figure 9

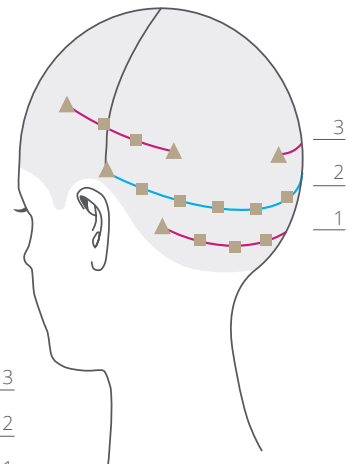


Figure 8

- 5.5" Weft
- 11" Weft
- ▲ Anchor Bead
- Bead



hairtalk® extensions are tapered. Typically, blending is minimal and extensions only need texturizing at the ends to blend with client's natural hair.

1. Determine desired length.
2. Part hair down the center, forehead to nape and bring both sections forward.
3. Take a 1" / 2.5 cm diagonal section and over direct the hair forward.
4. Gently shake the section releasing client's natural hair to allow to blending without cutting client's natural hair.
5. Repeat this process bringing each subsection forward until reaching the front center part.
6. Repeat on the opposite side.
7. Bring all hair to the back.
8. Take small vertical section and slide cut to blend the natural hair with extensions. See Step 4.
9. Finish the blend shaping the perimeter to desired length.

NOTES



QUICK MOVE UP VS. REMOVAL AND REAPPLICATION

Tools: hairtalk® Weft Tool-kit, Croc Clips, Single Prong Clips, and Sectioning Brush or Rattail Comb.

NOTES:

- To open the beads for either process - you may use Claw Nose Pliers to open with expansion or Needle Nose Pliers to open with tension.
- Client should arrive to either service with clean, dry hair.
- Always work neatly, keeping hair clipped away from clients' face and eyes.
- Remove weft working down the head. Place weft extensions on clean, dry surface.

QUICK MOVE UP

Quick Move Up is recommended **ONLY** at 4 weeks post application and up to 0.5"/1 cm of growth.

- Quick Move Up may only be done **ONCE** after initial application.
- After Quick Move Up, a complete Removal and Reapplication is required within 4 to 6 weeks due to natural shedding and loss of hair density within the bead.

STEPS

1. Section and secure client's natural hair up with a Croc Clip exposing the weft and grow out.
2. Section and secure the weft row with a 2nd clip, exposing the beads and beaded hair.
3. Starting at the center bead, slightly open the bead using your choice of pliers.
4. Using the Needle Nose pliers, grip and slide bead up, rotate hand until palm faces client's head and gently squeeze to close the bead.
5. Repeats Step 1-4, working from center to opening anchor bead then center to closing anchor bead to maintain even weight distribution throughout the Quick Move Up.

REMOVAL & REAPPLICATION

Removal and Reapplication is recommended 8-10 weeks after initial application or with more than 0.5"/1 cm of growth and required at 4-6 weeks after Quick Move Up.

STEPS

1. Section and secure client's natural hair up with a Croc Clip exposing the weft and grow out.
2. Starting at the either side of the head, hold Spring Loaded Nippers parallel to head and away from the ears.
3. Place point of nippers between stitches and carefully snip the sewed thread above the weft seam until weft is completely removed.
4. Snip thread stitched between beads.
5. Using your choice of pliers, open the beads.
6. Use your fingers to gently slide bead off the hair.
7. Once removal is complete, tidy the area and prep client for reapplication.

**Photos DO NOT represent typical 6-10 weeks of growth.*

Reapplication Process:

Refer to Preparation - pg.7

Refer to Application Part 1 and 2 - pg.8





Offer and review hairtalk® Hair Care and Weft Client Care Card to ensure your client is informed of proper at home care.

CLEAN | CONDITION

1. Avoid washing too often, once a week is recommended
2. Before washing, hold hair at mid-shaft and brush gently from the ends working your way up the hair with a dry-styling brush
3. Wash and condition hair using hairtalk® Cleanse Shampoo and Nourish Conditioner
4. Apply hairtalk® Nourish Plus Conditioning Masque as directed, working from mid-shaft to ends to hydrate and protect, especially on blonde hair
5. Rinse hair thoroughly to prevent product build up
6. After washing, towel dry, apply leave-in conditioner, and brush until hair is smooth and tangle free

STYLE

1. Brush 2x a day to prevent and remove tangles
2. Blow dry hair after washing to avoid matting
3. Apply styling, finishing, and setting products as you would on your own hair
4. Avoid heavy oils and serums at the root to avoid build up and maintain volume
5. Use thermal protectant when heat styling
6. Temperature setting: 300 degrees max for hairtalk® extensions to protect from dryness

SLEEP

1. Tie hair in a soft pony, braid, or top knot to avoid tangles and matting
2. Sleep on a silk pillowcase to avoid excess tangling and prolong your hairstyle

SWIM | SUN | SWEAT

1. Mix water and hairtalk® Nourish Plus in a spray bottle and lightly mist over hair to prevent possible discoloration from chlorine, salt, sunscreen and tanning products
2. Brush hair gently using a wet-styling brush
3. Tie hair in soft pony, braid, or top knot to prevent tangling
4. After swimming or sweating, wash to remove mineral build-up, brush gently, and style

NOTES

1. How long do the extensions last?

8 months. hairtalk® extensions applications last 8 to 10 weeks depending on natural hair growth, and may be reapplied up to 3 times.

2. Is it human hair?

hairtalk® extensions are 100% Remy human hair with cuticle intact and facing the same direction. Synthetic Practice Hair is temperature safe and used only on mannequins for instructional purpose.

3. Can extensions be colored?

hairtalk® offers a wide variety of Naturals, Balayage and Rooted shades allowing for over 1000 color combinations. **Coloring, lifting, or any chemical processing of the extensions voids the hairtalk® warranty. DO NOT** lighten/lift color. Keep all color away from the weft seam.

4. Can regrowth be colored?

Yes, regrowth may be colored. It is recommended that regrowth be colored 48 hours prior to application. If regrowth needs coloring between extension services and there is enough new growth to keep the color off of the weft seam, we suggest doing a partial retouch along the hairline.

Please note, coloring the extensions voids their warranty.

5. Can you iron, curl or blow-dry the hair?

Yes, avoid applying heat directly to the weft seam. Refer to hairtalk® Weft Client Care Card for heat styling and other guidelines.

6. What styling and finishing products can be used?

hairtalk® Hair Care is specifically formulated for extensions and works beautifully on natural hair. Use as directed. Refer to the hairtalk® Weft Client Care Card for complete care and styling guidelines.

7. Do you offer different textures?

hairtalk® extensions have a natural body wave. The hair can be worn straight, wavy or curled to style.

8. Can client's swim workout, sauna/steam?

Yes, with careful protection. Exposing extensions to sunscreen, and tanning oil may cause discoloration. Refer to the hairtalk® Weft Client Care Card for proper care instructions.

9. Client requires a beaded foundation row longer than standard 11" or 5.5" Instant Beaded Row™?

hairtalk® recommends either extending or connecting the Instant Beaded Row™:

(1) Extending: Apply Instant Beaded Row™ as mentioned in Application Part 1b without securing closing anchor bead. Create a lock stitch through Anchor Bead and secure bead using pliers, and finish extending the foundation row using the steps in Application Part 1a - Classic Beaded Row.

(2) Connecting: Apply Instant Beaded Row™ as mentioned in Application Part 1b, 1 IBR Left to Center and 1 IBR Right to Center, allowing the excess beads on both to drop in the center back of the head with 0.75" of space in between. Snip excess beads from both IBRs and connect the Anchor Beads by creating 1 lock stitch and 1 hitch stitch on either bead and secure.

10. What happens if my thread gets knotted or I run out of thread?

hairtalk® recommends one of two options based on location of problem:

(1) If within the first quarter of the row, it is best to remove completely and start over.

(2) If after the halfway point of the row, snip the thread leaving as much as possible to be able to tie a traditional knot 3x using both ends and trim excess. Thread a new needle and continue sewing using a lock stitch as your first stitch.

(3) If within the first quarter and halfway point of the row, use one of the two options above.

It is important the stylist who installed the extension examine them when a client presents concerns. In each of these scenarios and anytime client expresses issues with their extensions the stylist should **ALWAYS** consider:

1. When were the extensions installed?
2. How many move ups has stylist done?
3. Is the client using hairtalk® Hair Care? If not, what hair care products is client using?

Scenario 1: Extensions are slipping off

Causes: Improper application.

Fact Find:

- Was too little hair applied into the bead?
- Stylist must examine weft seam to determine if properly applied.

Recommendation:

- Remove weft extensions and re-apply with new thread and beads directed in the hairtalk® Weft Application Reference Guide.
- If Quick Move Up is an option, consider adding a second bead just below the back center and anchor beads for added support.

Scenario 2: Discoloration

Causes: Mineral and chemical deposits from hard water, ocean, lakes sunscreen, oils, and more.

Fact Find:

- What was original extension shade? And now?
- Has the client been swimming in a pool, ocean, or lake?
- Does clients home run on well water?
- Has client used tinted sunscreen, tanning or other lotions?
- Is client using purple shampoo or tinted shampoo?

Recommendation:

- Refer to hairtalk® Weft Client Care Card for proper care instructions BEFORE swimming.
- Apply hairtalk® Revive Demineralizing Treatment.
- Remind client of proper hair care as outlined on Weft Client Care Card.
- Remind client to apply hairtalk® Nourish Plus as recommended on the Weft Client Care Card before exposing extensions swimming, tanning etc.
- Client should avoid tinted product on hair and upper body skin which may come in contact with hair (ie. self-tanner).
- Client should avoid purple shampoo or any tinted hair care product.

Scenario 3: Matting and tangling

Causes: Client sleeping with wet hair, not brushing hair throughout day, not following hairtalk® Weft Client Care Card.

Fact Find:

- Has client worn extensions before or is this the first time?
- Refer to hairtalk® Weft Client Care Card.
- Does client sleep with wet or dry hair?
- Does client sleep with loose hair or tied in pony, braid or bun?
- How often in a day is client brushing for detangling?
- Is client detangling BEFORE washing?
- Is client leaving hair wrapped in a towel after washing for extended time?

Recommendation:

- Apply hairtalk® Nourish Plus as directed
- Strand by strand, gently detangle using a hairtalk® Extension Brush.
- Remind client to refer to hairtalk® Weft Client Care Card for proper at home care.

IMPORTANT: Chemically processing hairtalk® extensions VOIDS the hairtalk® warranty. Chemical processes that VOID the warranty include but are not limited to: coloring, purple/tinted products, perming, smoothing treatments (ie. keratin, relaxer), or any product that chemically alters natural hair will do the same to extensions and effectively VOIDS the hairtalk® warranty.

Scenario 4: Scalp Irritation/Itching

Causes:

- Application too close to scalp
- Over-directed application against the direction of natural hair growth
- Improper washing
- Possible allergy

Fact Find:

- Was application spaced properly from the scalp and from each other?
- Were extensions applied according to hairtalk® Weft Application Reference Guide?
- Does the client have any known allergies to nylon, silicone, or plastic?

Recommendations:

- Although hairtalk® Weft extensions and tools are made safe and comfortable, and clients don't typically report irritations or allergies; if your client is allergic or sensitive to nylon, silicone, or plastic, they may experience a reaction to our weft tools as well.
- If applied incorrectly, remove and reapply the extensions according to hairtalk® Weft Application Reference Guide using new tools: beads, thread, and/or Instant Beaded Row™.
- If irritation persists, contact your hairtalk® Sales Representative.

Scenario 5: Dullness and brittleness

Causes:

- Excessive/improper heat styling
- Insufficient moisture and nutrients
- Client is not using hairtalk® hair care

Fact Find:

- What color were the extensions originally? And now?
- What temperature setting is client using when heat styling?
- How often is client using hairtalk® Nourish Plus?

Recommendations

- Apply hairtalk® Nourish Plus as directed.
- If dullness persists, contact your hairtalk® Sales Representative.

NOTES

Proud supporter of



International Designs Corporation, LLC
Hallandale Beach, FL
800.327.7971
hairtalkusa.com

©2021, IDC, All Rights Reserved

Follow us!

@hairtalkusa
#hairtalkextensions

