



WEFT HAIR EXTENSIONS

hairtalk[®]
extensions

As the global innovators of the tape-in hair extension, hairtalk® extensions proudly delivers groundbreaking technology that challenges stylists to rethink their service categories. hairtalk® continues to be the leading professional hair extension brand in over 40 countries. Our promise to stylists is to continue providing the highest quality product innovation, tools designed for creative freedom, and full support behind the chair. Welcome to the world of endless possibilities.

Welcome to hairtalk®.

Weft Extensions

Comprised of both single and double density hand tied and machine weft extensions, the highly requested hairtalk® Weft Collection provides the freedom to customize every transformation. Creating seamless length, color, and volume all while accommodating clients' active lifestyles is more achievable than ever. Choose from 23 curated colors to create the perfect new look with the top quality 100% Remy human hair you know and trust.

CREATE THE LOOK

22" Double Hand Tied Weft, 11" wide
Colors Pale Blonde, White Blonde,
Rooted Sunflower Bronde & Rooted Dirty Blonde



HAND TIED WEFT EXTENSIONS

SINGLE HAND TIED ULTIMATE CUSTOMIZATION



hairtalk® Single Hand Tied Weft extensions are designed for ultimate customization with the freedom to mix, match, and layer colors. Available in two bundles per pack and two width options (11" & 5.5" wide), these single hand tied wefts offer a thin, lightweight, and flexible weft seam with even fullness from roots to ends.

11" / 28cm wide

Freedom to create endless color combinations

2 BUNDLES PER PACK

HT503	14" / 35cm	24g / 12g per weft
HT504	18" / 45cm	30g / 15g per weft
HT505	22" / 55cm	40g / 20g per weft

5.5" / 14cm wide

Perfect for the nape and closer to the hairline

2 BUNDLES PER PACK

HT513	14" / 35cm	12g / 6g per weft
HT514	18" / 45cm	15g / 7.5g per weft
HT515	22" / 55cm	20g / 10g per weft



DOUBLE
HAND TIED
DOUBLE THE DENSITY



The innovative hairtalk® Double Hand Tied Weft extensions deliver double the density of hair than the industry standard hand tied weft, allowing stylists to use less wefts per row for a simpler and quicker application. Fullness is evenly distributed from roots to ends with the same thin, lightweight weft seam sought by stylists and clients alike. Two width options (11" & 5.5" wide) and single bundle packs provide the freedom to customize each application.

11" / 28cm wide

Designed to create fullness, length and volume

1 BUNDLE PER PACK

HT500	14" / 35cm	24g
HT501	18" / 45cm	30g
HT502	22" / 55cm	40g

5.5" / 14cm wide

Perfect for the nape and closer to the hairline

1 BUNDLE PER PACK

HT510	14" / 35cm	12g
HT511	18" / 45cm	15g
HT512	22" / 55cm	20g



CREATE THE LOOK

22" Double Hand Tied Weft, 11" wide
Colors Pale Blonde, White Blonde,
Rooted Sunflower Bronde & Rooted Dirty Blonde



SINGLE
MACHINE
SOFT & COMFORTABLE



hairtalk® Single Machine Weft extensions deliver a softer, more comfortable weft than the industry standard machine weft while providing the density desired. This option allows for a customizable transformation with no excess unraveling when cut.

30"-35" / 76-89cm wide

Softest weft seam providing the most comfortable wear

1 BUNDLE PER PACK

HT600	14" / 35cm	60g
HT601	18" / 45cm	80g
HT602	22" / 55cm	100g



DOUBLE
MACHINE
MAXIMUM DENSITY



Allowing for maximum density, hairtalk® Double Machine Weft extensions are perfect for clients with thicker hair. This option is customizable to every head shape and size with no excess unraveling when cut.

30"-35" / 76-89cm wide

Maximum density that is perfect for clients with thicker hair

1 BUNDLE PER PACK

HT603	14" / 35cm	120g
HT604	18" / 45cm	160g
HT605	22" / 55cm	200g



WEFT TOOLS

Perfect your weft extensions service with hairtalk® signature professional tools. All the tools you need for weft application, removal, and reapplication in one place.



weft collection color ring

HT5091

A stylist's must-have tool for color matching. The Weft Collection Color Ring is made of 100% human hair and includes all colors offered in the hairtalk® Weft Collection.



PATENT PENDING instant beaded row™

HT713 | For 11" wide weft | 3 per pack

HT714 | For 5.5" wide weft | 3 per pack

Weft application reimagined. These pre-sewn beaded rows set your foundation and cut your service time behind the chair in half. **Choice of: Light, Medium, Dark**



weft tool case

HT705

All the tools needed for a weft extensions application, removal, and reapplication. This branded Weft Tool Case includes: (1) Claw Nose Pliers, (1) Needle Nose Pliers, (1) Spring Loaded Nippers, (1) Bead Looping Tool, and (3) 2" C-Needles.





sectioning brush
HT222
white rattail comb
HT223

Ergonomically designed, the Sectioning Brush and White Rattail Comb are key tools in precision sectioning when applying extensions.



hair grippers
HT215 | 4 pieces per pack

Secure loose hairs up and away. These velcro Hair Grippers won't snag or get tangled, and are super light for clean sectioning and precise placement.



spring loaded nippers
HT701

Leave the shears out of it. These Spring Loaded Nippers are designed to easily nip thread throughout application and removal.



claw nose pliers
HT700

These Claw Nose Pliers fit perfectly into the bead to create an easy and more efficient bead opening process.



needle nose pliers
HT703

Never leave a bead loose again. These Needle Nose Pliers are essential for all weft extensions installations.



bead looping tool
HT702

A must-have tool for all bead installations. Save time by loading the flexible wire with beads for a quick beading process.



C-needles
HT704 | (3) 2" needles per pack

Curved weaving needles used throughout the entire sewing process.



silicone lined beads
HT708 | 250 beads per pack

These 3mm Silicone Lined Beads create a secure, safe, non-slip foundation for all weft extensions applications.
Choice of: Light, Medium, Dark



nylon thread
HT709 | 4 oz. 1400m

Lightweight Nylon Thread that provides the strength needed for all sewn-in applications.
Choice of: Light, Medium, Dark



single prong clips
HT706 | 10 clips per pack

Keep your sections clean with these lightweight and sturdy clips.



medical marker
HT707

This medical-grade marker is perfect for marking the beginning and end of each weft row.



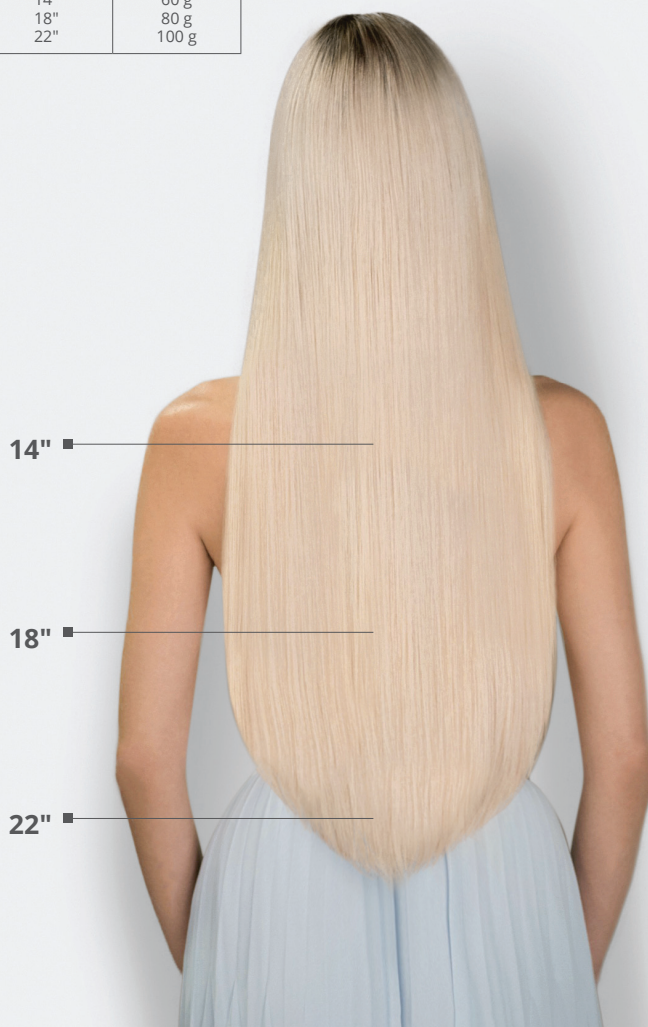
magnetic wristlet
HT710

Keep your C-needles on hand at all times with this comfortable Magnetic Wristlet.

GRAMS & LENGTHS

hairtalk® Weft extensions are available in three lengths and come tapered, allowing for a seamless blend into clients' natural hair.

WEFT	LENGTH	GRAMS
1 Double Hand Tied Weft 11" wide	14" 18" 22"	24 g 30 g 40 g
1 Single Hand Tied Weft 11" wide	14" 18" 22"	12 g 15 g 20 g
1 Double Hand Tied Weft 5.5" wide	14" 18" 22"	12 g 15 g 20 g
1 Single Hand Tied Weft 5.5" wide	14" 18" 22"	6 g 7.5 g 10 g
1 Double Machine Weft 30" - 35" wide	14" 18" 22"	120 g 160 g 200 g
1 Single Machine Weft 30" - 35" wide	14" 18" 22"	60 g 80 g 100 g



14" ■

18" ■

22" ■

Naturals

Comprised of solid and blended blondes, brunettes, and natural hair tones your clients request at the chair



Ebony

Ash Brown

Chestnut

Ash

Pale Blonde



Ash Platinum
Blonde

White Blonde

Balayage

Mimics behind the chair hand-painted techniques providing the most natural transition from root to end



Espresso
Balayage

Chocolate
Balayage

Bronde
Balayage

Nordic Blonde
Balayage

Champagne Blonde
Balayage

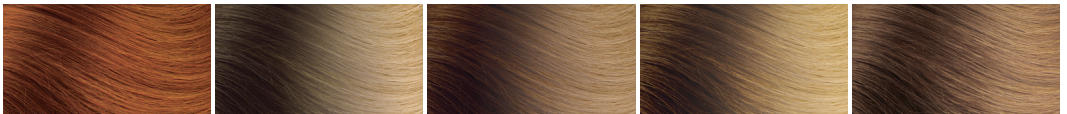


Arctic Blonde
Balayage

Beach Blonde
Balayage

Rooted

Perfect lived-in look without the need for chemicals; transition from a darker 7cm root into a lighter hue in one weft



Rooted
Cinnamon Red

Rooted Dirty
Blonde

Rooted Hazelnut
Bronde

Rooted Sunflower
Bronde

Rooted Smoke
Brunette



Rooted Ash
Blonde

Rooted Ash
Platinum

Rooted Nordic
Blonde

Rooted Beige
Blonde

Please note, due to the specialized techniques of these new colors, root transitions may vary slightly between wefts. Swatches are shade representations only. Please refer to your Weft Collection Color Ring when selecting shades. Warranty: hairtalk® warrants the quality of 100% human hair for 6 months from date of purchase. Please note that cutting the hand tied weft voids the warranty. Please refer to hairtalkusa.com for more details. For patent information, please visit hairtalkusa.com.

ENDLESS
POSSIBILITIES

hairtalk® extensions

Hallandale Beach, FL
954.963.9680 | 800.327.7971
hairtalkusa.com

© 2021, IDC, All Rights Reserved

@hairtalkusa
#hairtalkextensions

